



# Veeam Monitor

## The industry standard for VMware monitoring



As part of the Veeam ONE Solution™, Monitor has won awards from VMworld, *Virtualization Review* and SearchServerVirtualization.com.

“Veeam Monitor has become an essential tool in our virtual management toolbox. We use it to evaluate the performance of our virtual host systems. This information in turn helps us make decisions on how to best allocate our virtual host resources to new virtual machines.

“We looked for a tool for quite some time that was compatible with ESXi, and found what we were looking for in Veeam Monitor. Veeam Monitor is easy to install, simple to configure, and collects the data you need to effectively monitor your VMware hosts.”

**Tom Williamson**  
Network Analyst  
City of Lynchburg



Veeam Monitor is verified by VMware as VMware Ready.

Veeam Monitor™ is an easy-to-deploy, framework-independent VMware monitoring solution designed to meet the day-to-day needs of VMware administrators. Built from the ground up specifically for the virtual world, Monitor provides support for troubleshooting and issue resolution, as well as trend reporting—equipping you to proactively manage the health and performance of your VMware infrastructure today and over the long term.

With Monitor, you can view both real-time and historical resource usage for any virtual infrastructure object, as well as infrastructure events, all on a single screen. This allows you to see your virtual infrastructure as a unified entity, not just a collection of isolated guests.

Once you determine what is causing a specific performance issue, you can drill down into individual virtual machines (VMs), view their running processes, and even terminate processes as needed—all from the Monitor interface. Or you can simply connect to the VM console to resolve the issue.

### Business-centric monitoring

Monitor leverages Veeam Business View™ to enable performance monitoring, alerting and reporting for VM groups based business unit, department, location, purpose, service-level agreement or any other criteria you define. This ability to perform business-centric monitoring allows you to create flexible alerts based on known server type characteristics and the potential business impact of an outage for more granular service-level management.

### Virtual infrastructure performance analysis

Monitor shows comprehensive resource consumption and workload data for hosts, clusters and datastores, with visibility all the way down to the individual VM and the applications running inside it. Find out at a glance which components of your VMware infrastructure are the largest resource consumers and which ESX hosts are least loaded—right now and over time. Drill down into Windows and Linux/Unix VMs, ESX hosts and vCenter Servers to monitor resource usage for specific applications.

### Monitoring dashboards

Monitor includes a summary dashboard for each object in the infrastructure tree. You can now get an at-a-glance view of the most useful information for any object, and drill down to more detailed data, as required.

### Storage monitoring

Monitor provides full storage monitoring capabilities, including disk space, disk issues and datastore monitoring. The latter allows for viewing datastore load information aggregated from disk utilization statistics of all VMs and hosts using the specific datastore. This allows you to see the actual cumulative load on a particular datastore and alarm when the datastore load is above a specified threshold.

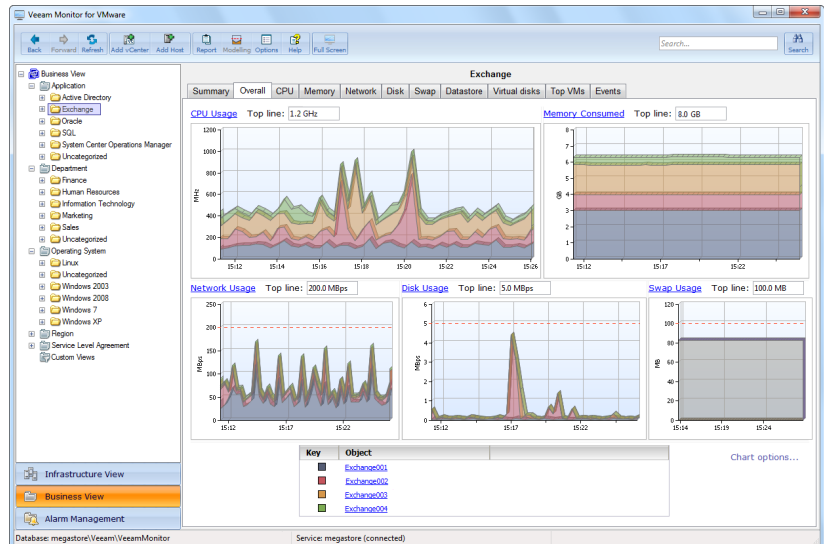
To learn more, visit: [www.veeam.com](http://www.veeam.com)

## Veeam ONE Solution for VMware management

Veeam Monitor and Veeam Monitor *Plus* are part of the Veeam ONE Solution for VMware management. Veeam ONE provides a single solution to optimize the performance, configuration and utilization of VMware infrastructure. It is available in 3 editions to accommodate each customer's specific monitoring environment. Monitor *Plus* is for customers seeking a framework-independent monitoring solution.

### Supported platforms

- VMware vSphere 4.x
- VMware Infrastructure 3 (VI3)



Monitor offers at-a-glance views of key performance metrics across multiple vCenter Servers.

### Advanced alerting and built-in intelligence

Monitor includes over 125 pre-defined alarms and thresholds and an extensive knowledge base. The knowledge base explains each alarm and provides possible causes, suggested resolution, and links to sources of additional information. You get monitoring you can rely on, without getting overwhelmed with irrelevant alarms.

With Monitor, you can easily set up e-mail notifications or SNMP traps for important events such as a given number of running VMs is exceeded, host hardware status changes or specific events are generated by vCenter Server. The alarm modeling feature lets you quickly ensure that you have correctly set alarm benchmarks and thresholds by testing a newly created alarm using historical data.

### Correlation of event and performance data

Monitor helps you understand how virtual infrastructure activities affect VM performance and solve resource usage mysteries with real-time monitoring graphs displaying known virtual infrastructure events, such as vMotion, snapshot creation/deletion, and backup activities, directly on performance graphs.

### Consolidated monitoring

Monitor is an enterprise-class application that enables multi-user access to performance data without affecting ESX host or vCenter Server performance or changing your access policies. It gathers all performance information into a Microsoft SQL Server database, allowing users to access infrastructure-wide performance data and reporting as needed. Monitor is integrated with vCenter Server to provide cluster-aware monitoring of your VMs.

And with support for multiple vCenter Servers, Monitor shows performance data from your entire virtual infrastructure on a single screen—no matter how large your VMware deployment is.



To learn more, visit: [www.veeam.com](http://www.veeam.com)